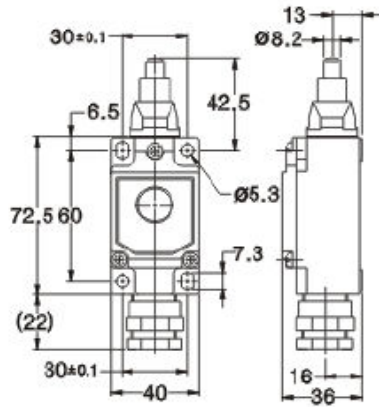
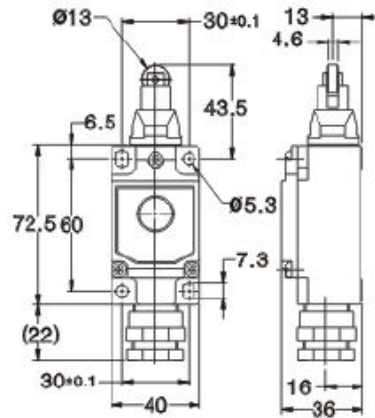


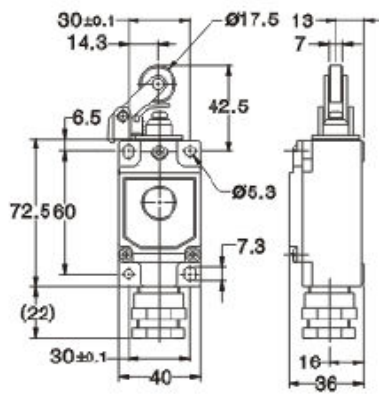
KLLAP1



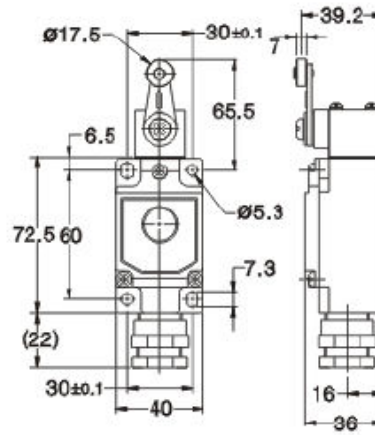
KLLAP2



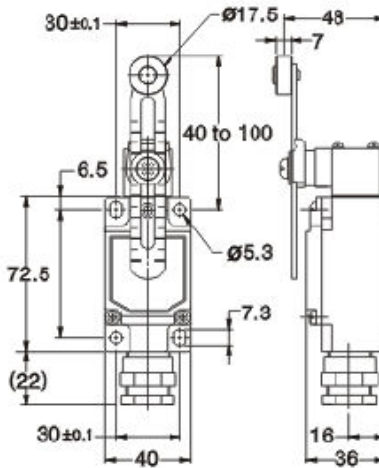
KLLAL1



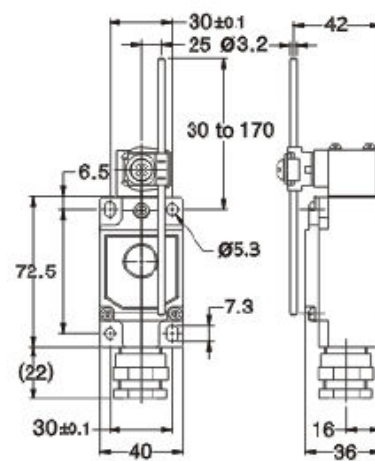
KLLAL2



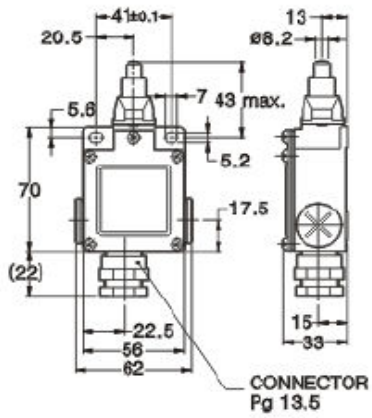
KLLAL3



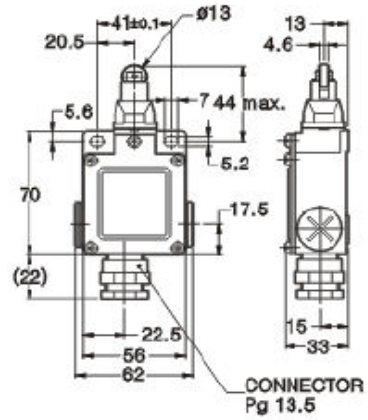
KLLAL4



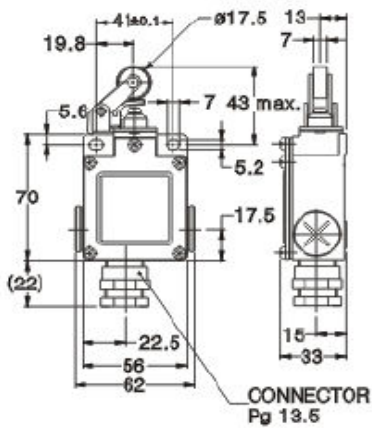
KLMAP1



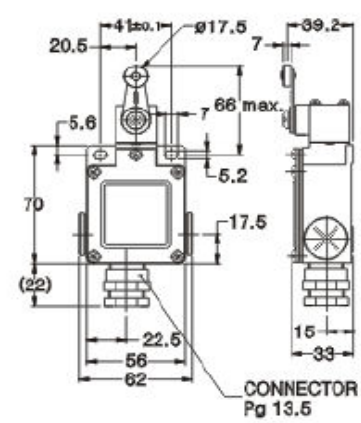
KLMAP2



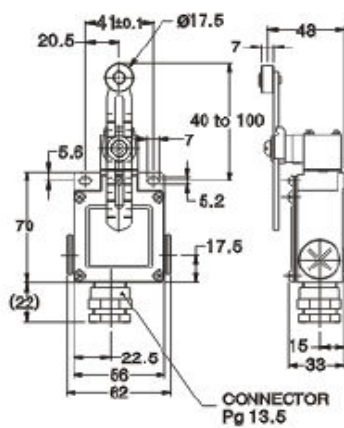
KLMAL1



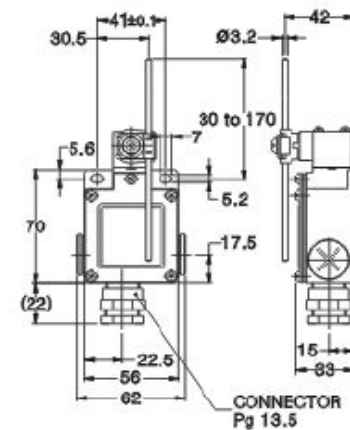
KLMAL2



KLMAL3

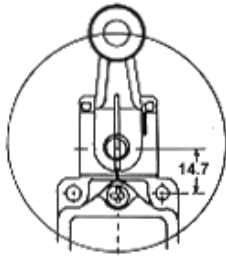


KLMAL4

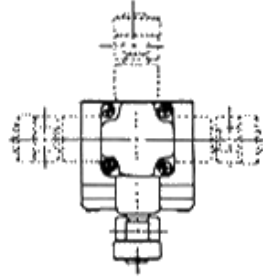


Método de Ajuste

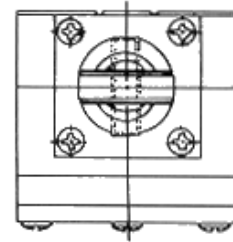
Ajuste da Roldana



O atuador pode ser posicionado e fixado em qualquer posição

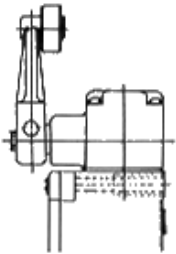


Ajuste do Cabeçote

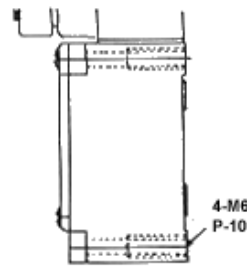


O atuador pode ser ajustado com movimentos de 90° removendo os 4 parafusos do cabeçote do atuador

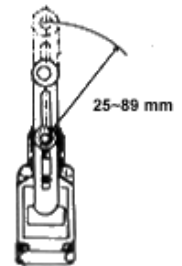
A alavanca com roldana pode ser montada com a face para dentro ou para fora



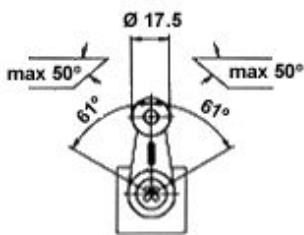
Montagem Inversa



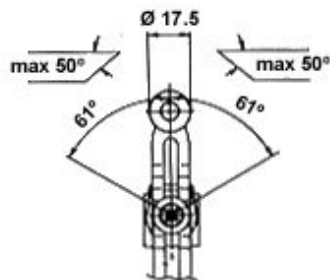
Quando a chave for montada na parte inversa do painel, usar os furos de montagem



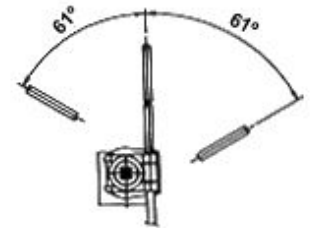
Tipo Alavanca T.T.P



Tipo L2

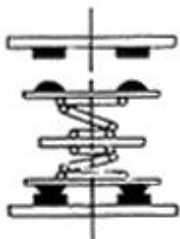


Tipo L3

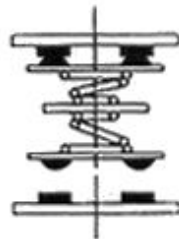


Tipo L4

Contatos Móveis Separados



(N.C)
OFF



(N.O)
ON

Contato Mecânico Duplo

